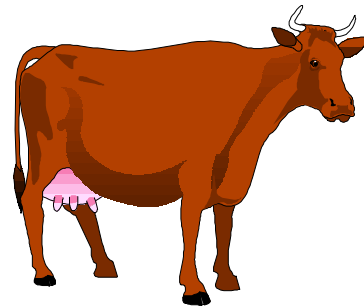


## DAIRY CATTLE



**CHAIRPERSON:** Dwayne Smith, (519) 845-3603

**COMMITTEE:** Wayne Maw, Harold Smith

**RULES:** All Exhibitors showing animals in Classes 25 - 26 must register at the office prior to the show. No animal can be shown in more than one class except for Specials. Pedigrees must be available at Ringside.

**NOTE:** Class 25 - 4-H Show, No Membership charged to Exhibitor, 10% of winnings retained.

**Class 26 - Open Show**, Membership required, 10% of winnings retained. Two entries per section allowed, to a maximum of three sections, otherwise only one entry per Exhibitor.

### CLASS 25 LAMBTON 4-H DAIRY ACHIEVEMENT DAY

**Note:** For 4-H Members representing Wyoming, Forest, & Sarnia-Kiwanis Dairy Club. All breeds show together.

**SPECIAL 301 Herdsman Award (see specials)**

**SPECIAL 302 - Pee-Wee Showmanship (see specials)**

Section 1: Novice Showperson -- 4-H member in first year

..... \$20.00 \$18.00 \$16.00 \$14.00 \$12.00  
\$10.00 to all placings

Section 2: Junior Showperson - 4-H member 11-13 yrs old as of January 1, 2009

..... \$20.00 \$18.00 \$16.00 \$14.00 \$12.00  
\$10.00 to all placings

Section 3: Intermediate Showperson -- 4-H member 14 - 15 yrs old as of January 1, 2009

.....\$20.00 \$18.00 \$16.00 \$14.00 \$12.00  
\$10.00 to all placings

Section 4: Senior Showperson - 4-H member 16 yrs old and over as of January 1, 2009

.....\$20.00 \$18.00 \$16.00 \$14.00 \$12.00  
\$10.00 to all placings

**SPECIAL 303 - Champion & Reserve Showperson (see specials)**

Section 5: -Junior Calf - born March 1, 2009 to May 31, 2009

.....\$20.00 \$18.00 \$16.00 \$14.00 \$12.00  
\$10.00 to all placings

Section 6: Junior Heifer -- born December 1, 2008 to February 29, 2009  
.....\$20.00 \$18.00 \$16.00 \$14.00 \$12.00  
\$10.00 to all placings

Section 7: Senior Heifer -- born September 1, 2008 to November 30, 2008  
.....\$20.00 \$18.00 \$16.00 \$14.00 \$12.00  
\$10.00 to all placings

Section 8: Summer Yearling - born June 1, 2008 to August 31, 2008  
..... \$20.00 \$18.00 \$16.00 \$14.00 \$12.00  
\$10.00 to all placings

Section 9: Junior Yearling - born March 1, 2008 to May 31, 2008  
..... \$20.00 \$18.00 \$16.00 \$14.00 \$12.00  
\$10.00 to all placings

**Special 304 - Champion and Reserve Calf (see specials)**

**CLASS 26  
OPEN DAIRY SHOW**

**Note: Animals shown in Sections 5 - 9 not eligible for Sections 10 & 11  
All Breeds show together**

Section 10: Heifer Calf -- born September 1, 2008 to May 31, 2009  
.....\$20.00 \$18.00 \$16.00 \$14.00 \$12.00  
\$10.00 to all placings

Section 11: Yearling -- born September 1, 2007 to August 31, 2008  
..... \$20.00 \$18.00 \$16.00 \$14.00 \$12.00  
\$10.00 to all placings

**Special 305 - Junior Champion & Reserve (see specials)**

**Special 306 - Best Dairy Calf (see specials)**  
Born March 1, 2008 to May 31, 2009

**Special 307 - Junior Dairy Herd (see specials)**  
3 Females owned by Exhibitor

Section 12: Two-year-old born September 1, 2006 – August 31, 2007 (milk or dry)  
..... \$30.00 \$25.00 \$22.00 \$20.00

Section 13: Three-year-old born September 1, 2005 – August 31, 2006 (milk or dry)  
..... \$30.00 \$25.00 \$22.00 \$20.00

Section 14: Four-year-old born September 1, 2004 – August 31, 2005  
..... \$30.00 \$25.00 \$22.00 \$20.00

Section 15: Mature Cow born prior to September 1, 2004(milk or dry)  
..... \$30.00 \$25.00 \$22.00 \$20.00

**Special 308 Grand Champion and Reserve (see specials)**

Section 16: Best Udder – from Sections 13, 14, 15. **Two** animals from each section appointed by the judge.  
*1st prize \$15.00 voucher 2nd prize \$10.00 voucher donated by Camlachie Grain and Feed (Watford Division)*

**DAIRY SPECIALS**

**Special 301 - Herdsman Award**

Based on Team effort and Cooperation 4-H members, organization, presentation of animals, neatness and general appearance of display to the public

*1st place \$60.00 2nd place \$40.00 3rd place \$25.00  
Donated in memory of Murray Campbell by Sandra Capp and Lynn Campbell Atkins*

**Special 302 - Pee-Wee Showmanship Class** - for kids 10 years old and younger - as of January 2, 2009

**Calves to be shown in this class are to be born after June 1, 2009**

*Trophies donated by Royal Bank  
1st- \$5.00 2nd - \$3.00 3rd - \$2.00 donated by Forest Veterinary Clinic  
Ninth place and higher - \$2.00 donated by P. & W.A. S.*

**Special 303 - Champion & Reserve Showperson**

*1st prize \$25.00, 2nd prize \$15.00. donated by Harold and Gwen Smith*

**Special 304 - Champion & Reserve Calf (sections 5 - 9)**

*1<sup>st</sup> -- \$25.00, 2nd -- \$15.00, donated by Wyoming Foodland*

**Special 305 - Junior Champion & Reserve (sections 10 & 11) - Rosettes**

**Special 306 - Best Dairy Calf-** born March 1, 2008 to May 31, 2009 (Sections 5 - 11)  
*1st prize \$20.00 2nd prize \$10.00 donated by McNeil Feed & Grain, Watford*

**Special 307 - Junior Dairy Herd - 3 Females owned by Exhibitor**

**Exhibitor can use any animal that was shown in Section 5 - 11 as long as Exhibitor is the Owner of the animal.**

*1st prize - \$15.00 2nd prize - \$12.00 3rd prize - \$10.00 4th prize - \$8.00 5th prize - \$5.00  
donated by Gamble & Associates, Petrolia*

**Special 308 - Grand Champion & Reserve (Sections 12 - 15) - Rosettes**

**Grand Champion receives \$50.00 Gift Certificate donated by Al Webster Farm Supply, Wyoming**